

Kern 2600

Universal inserting system

kernMail



The Universal inserting system Kern 2600, the workaholic for your Mailroom.

High efficiency input modules combined with an unbeatable modularity characterizes the Kern 2600 inserting system. The continuous and single-sheet input modules are designed for the requirements of a modern production. Semi-automated processes ensure short set-up times.

The flexible and universal Kern 2600 inserting system is designed to operate single channel as well as multichannel systems. Furthermore, the system can at any time - thanks to its modular concept - be individually adapted to new customer requirements.

Simple operation and maintenance possibilities are offered through the ergonomic construction and the reduction of some setup parameters of the Kern 2600. The transport level of the module had been set very low with 63 cm to

ensure best monitoring of the process and simplifying the loading of documents into the system.

A quick and direct configuration of the reading units of the Kern 2600 is made possible through the reading concept with support of the «live-picture-display» for every single applications. Wherever reading occurs in the system, the controlling is performed by the same reading software.

The universal inserting system Kern 2600 is composed of extremely durable, state-of-the-art components. A particularly noteworthy aspect of the product is the consistent use of servo technology, which serves to improve system availability substantially. Hence the Kern 2600 is ideal for continuous, multiple-shift use.

Our Services

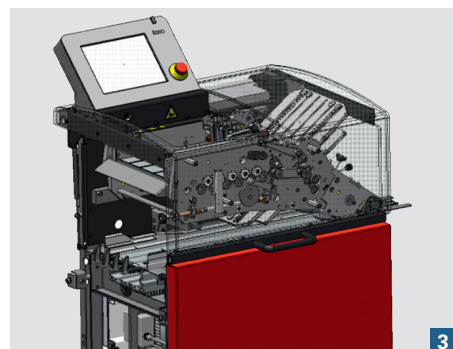
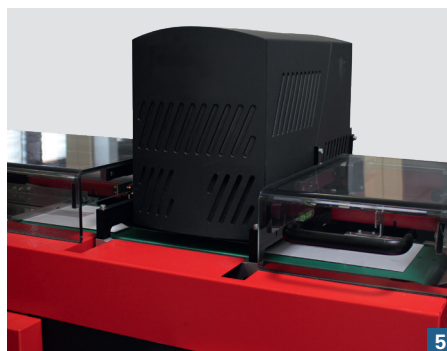
- Personal consulting on site
- Requirement analysis
- Working out an optimal solution
- System integration
- On-site training of your employees
- Comprehensive support during the operational phase

Features

- Document format from at least min. 84×148 mm up to max. 356×225 mm
- Processing of up to 16,000 envelopes/hour
- Envelope format C6 up to B5
- Kern mailFactory® compatible
- Maximum flexibility and efficiency
- Simple handling and access to the processes
- Highest document security when processing
- Small to middle production volumes



Additional to the System **Kern 2600**



1 Kern continuous form cutter with integrated grouping- and folding unit (SIG)

- This integrated input module combines three functions in one compact unit: cutting, grouping and folding of documents.
- The module guarantees high availability and easy handling. In addition it creates flexibility in the application parametrisation.
- Performance: up to 36,000 documents/hour.
- Processing directly from roll and stack – whether 1, 2-up – with pin or pinless.
- Reading capacity of all common codes across the whole format area.
- 4 Pocket folding system as standard.

2 Kern single sheet feeder with integrated grouping- and folding unit (EFQ)

- Three functions in a compact unit: separation, grouping and folding of documents.
- Reliable and simple adjustability
- Performance: up to 32,000 documents/hour.
- Reading capacity of all common codes across the complete format area.

- Quick change of applications
- Maximum flexibility and efficiency
- Four folding plates by default. The same as with the new single sheet feeder.
- 4 Pocket folding system as standard.

3 Friction feeder with folding unit (FSH)

- Input module for single sheets
- Separation of documents
- Single fold of the documents (0–2 horizontal folds, no layer fold possible)
- Composed of friction feeder with 4 pocket folding system
- Perfect for the processing of reprint jobs

4 FullPageScan

- The optional FullPage Scan reading for the Kern 996 reduces the manual access in the system, which accelerates the processing of jobs.
- The flexible reading system reads different codes at arbitrary positions, which increases the reliability and security when processing a job.

5 Print at Exit

- With the optional printing module, the Kern 2600 can be easily integrated into the White-Paper concept.
- The Kern printing module is the answer to the increasing demand for printing solution for changing logos and personalized information on envelopes.
- Logos and images in full color up to 600 dpi printing quality.
- Equipped with a Impika full color printing head, even high demands on the printing quality can be achieved.

Kern AG

3510 Konolfingen
Switzerland

Phone +41 31 790 35 35
info.switzerland@kernworld.com
www.kernworld.com